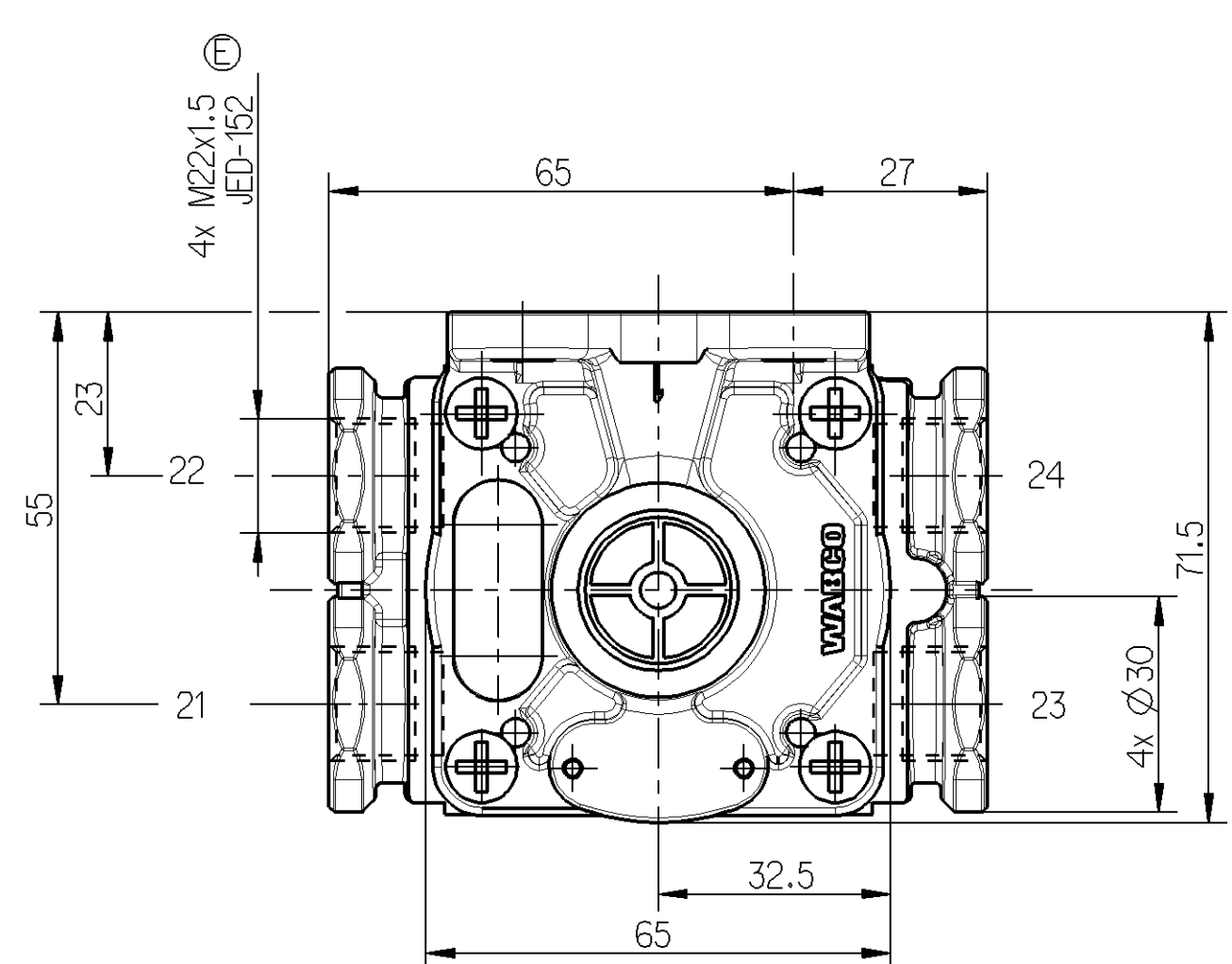
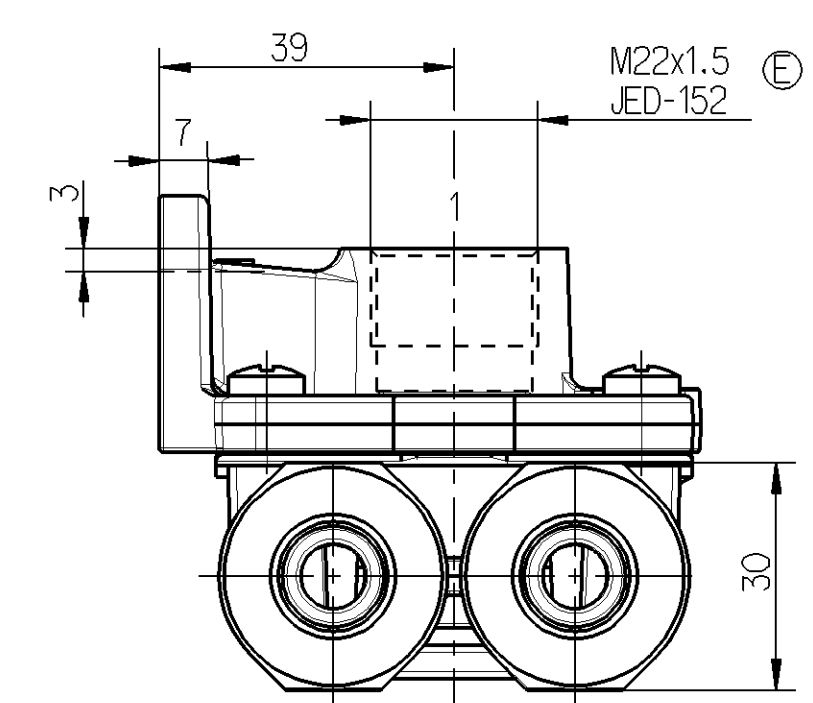
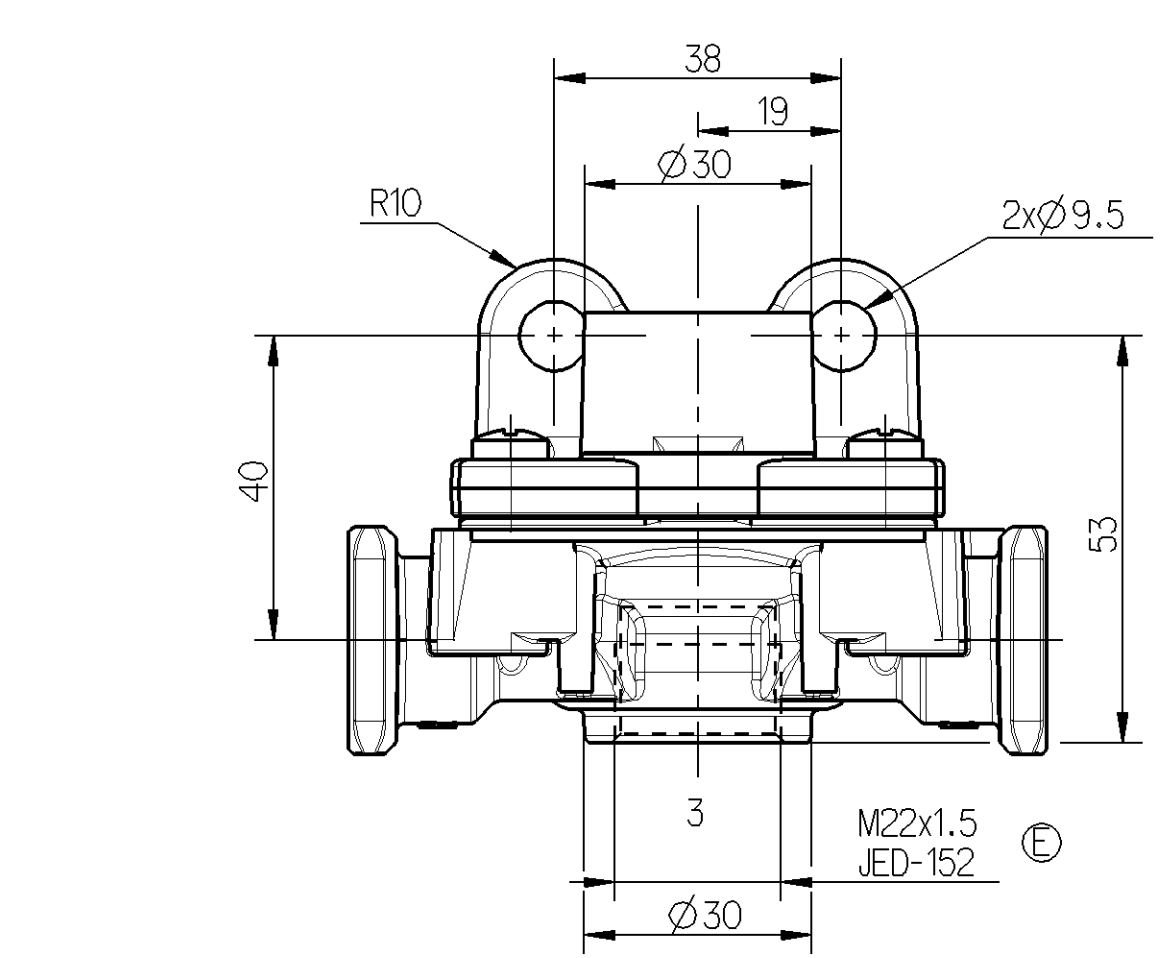


Toute communication ou reproduction de ce document, toute exploitation ou communication de son contenu sont interdites, sauf autorisation expresse. Tout incriminant ou auteur de contrefaçon sera poursuivi en justice. Toute réimpression ou utilisation non autorisée sans la permission écrite de la WABCO est formellement interdite. Toute réimpression ou utilisation non autorisée sans la permission écrite de la WABCO est formellement interdite.

Non è permesso consegnare o terzi o riprodurre questo documento, né utilizzare il contenuto o reperire comunque noto o terzi. È fatto riserva di tutti i diritti brevetti, marchi e marchi di fabbrica. È fatto riserva di tutti i diritti brevetti, marchi e marchi di fabbrica.

Copying of this document and giving it to others and the use or communication of the contents thereof, are forbidden without express permission of WABCO. All rights are reserved in the event of the grant of patent or registration of a utility model or design. This document is the subject of copyright.



SYMBOL SYMBOL SYMBOLE SIMBOLO		
SUPPLY PRESSURE VORRATSDRUCK PRESSION PNEUMATIQUE D'ALIMENTATION PRESSIONE PNEUMATICA DI ALIMENTAZIONE		12 BAR MAX.
CONTROL FLUID STEUERMEDIUM FLUIDE DE COMMANDE FLUIDO DI COMANDO		AIR LUFT AIR ARIA
THERMAL RANGE THERM. ANWENDUNGSBEREICH TEMPERATURE D'UTILISATION TEMPERATURA DI UTILIZZAZIONE		-40°C.....+80°C
MARKING OF PORTS ANSCHLUSSKENNZEICHNUNG MARQUAGE DES ORIFICES MARCATURA DEGLI ORIFIZI		TORQUE FOR CONNECTIONS ANZUGSMOMENT FEUR SCHRAUBSTUTZEN COUPLE DE SERRAGE DES RACCORDS COPPIA DI SERRAGGIO DEI RACCORDI
1	SUPPLY VORRAT ALIMENTATION ALIMENTAZIONE	53 Nm MAX
21 22 23 24	DELIVERY AUSGESTEUERTE LUFT UTILISATION UTILIZZAZIONE	34 Nm MAX
3	AIR EXHAUST ENTLUEFTUNG ECHAPPEMENT SCARICO	53 Nm MAX

General Specification: JED-334-0			Copyright WABCO®		WABCO
Further Technical Data:			Date	Signature	
Doc. Code:		Sheet:	To:	2006-09-20	A.LESZCZUK
General Tolerances JED-261			Checked		QUICK RELEASE VALVE SCHNELL LOESEVENTIL VALVE DE DESSERRAGE RAPIDE VALVOLA DI SFRENTURA RAPIDO
Range of Nominal Dimensions (± mm)			2008-03-25		
Class	1)	≤ 50	> 50 ≤ 180	> 180 ≤ 400	> 400
Fine		0.5	1.0	1.5	2.0
Medium	X	1.0	2.0	3.0	4.0
Coarse		2.0	3.5	5.0	6.5
Tapped Holes acc. JED-152			Expert		T.SUTOR
State of Revision			Mass	Scale	Material No.
111038	4xE	08-03-14	0.324	1:1	973 500 038 0
95319	3xO	95-12-27	Size	TRI	WABCO Id. No.: 9735000380
92194	3xC	92-12-03	A 2	540	Doc.Code Language Sheet
1) Tolerance Class Applied Crossmarked			Function Code		005 ML 1/1
			CAD System		Pro/E
			Prod.Type		Replacement for

100mm

dwg: 9735000380_005 / Version: -2 / state: Approved / mdf: 9735000380_005